

ESDEC

INNOVATIVE MOUNTING SYSTEMS



**RELIABLE
AND QUICK
INSTALLATION ON
PITCHED ROOFS**

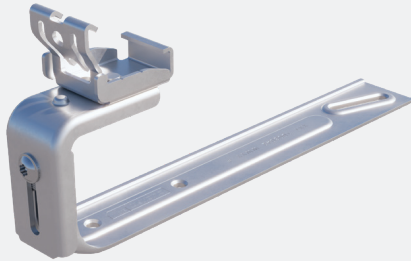
CLICKFIT

EVO

SLATE ROOF

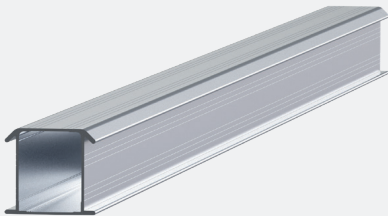
www.esdec.com

THE 4 COMPONENTS OF CLICKFIT EVO SLATE ROOF



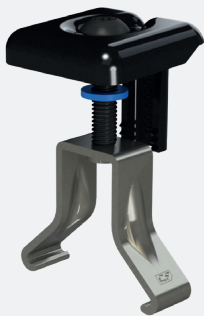
1. SLATE HOOK

- Fully pre-assembled slate hook
- Extra thin slate hook (4mm) for mounting under the slate.
- Mounting by tightening two flat-head screws, with a slotted hole to make it easier to find the right place for the screw on the substructure.
- Rotatable click connection; self-aligning with integrated cable management
- For both landscape and portrait orientation
- Stepless adjustment of height.



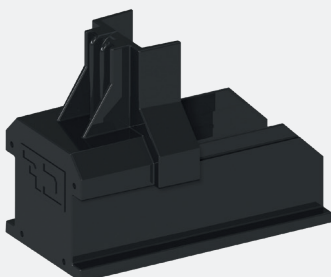
2. MOUNTING RAIL

- Quick and easy to click into the ClickFit EVO click connection on the hook
- Available in different lengths
- Rails can be coupled with a coupler



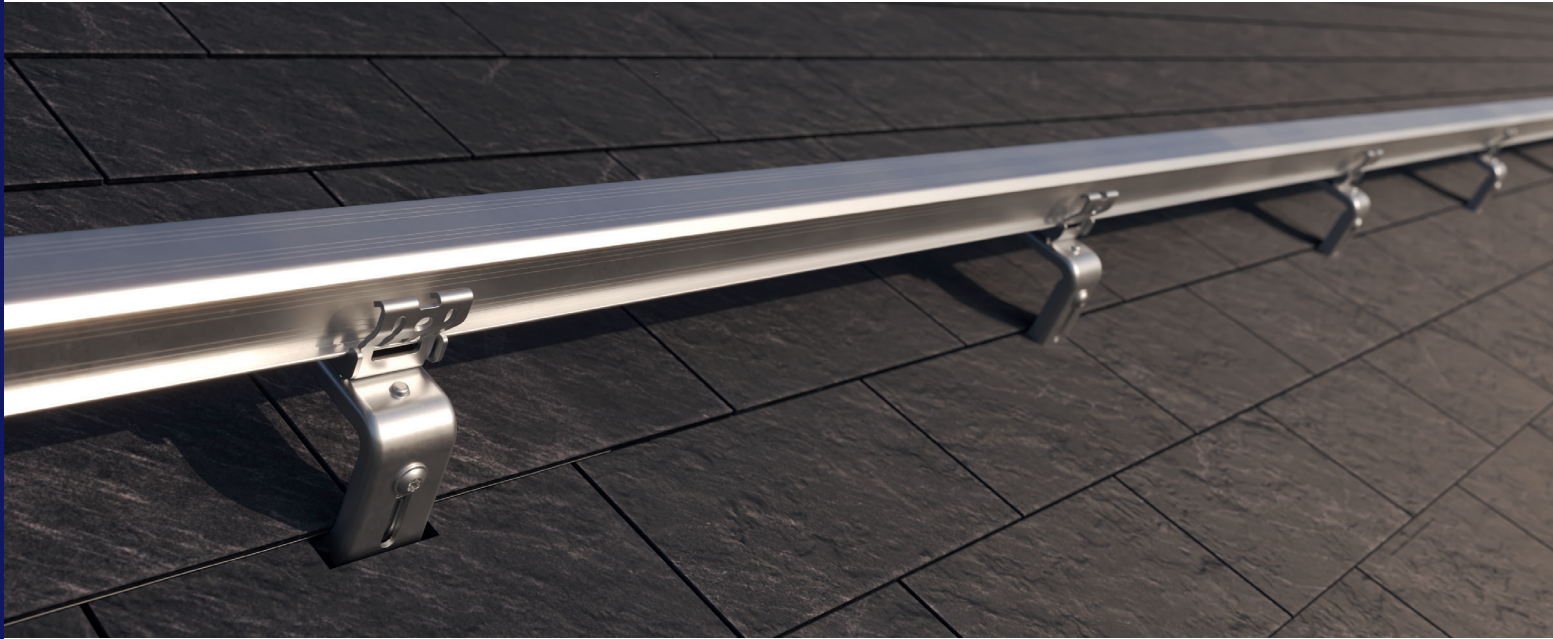
3. UNIVERSAL MODULE CLAMP

- Universal module clamp: suitable for solar panels with a frame thickness between 30 and 50 mm
- Can be used as centre clamp or as end clamp in combination with end cap
- Standard assembly
- Including bonding for the solar panels
- Available in grey and black



4. END CAP

- End cap holds the module clamp in its position
- Elongated end cap to allow for aesthetically pleasing finish
- Available in grey and black



EASY INSTALLATION ON THE ROOF

ClickFit EVO Slate Roof: quick & easy

ClickFit EVO Slate Roof has been specially developed for mounting the popular ClickFit EVO system on slate roofs. Since the mounting system consists of only 4 components and standard solar panels can be mounted on slate roofs with only 1 tool, with ClickFit EVO you can mount the solar panels on the roof in next to no time! The hooks are pre-assembled and already fitted with the familiar ClickFit EVO click connection to fix the rails to the slate roof hook. This saves you a lot of installation time.

Slate roofs: a specialist job

The ClickFit EVO system is suitable for many types of slate roof. Our flat hook, which is only 4mm thick, makes it easy to install on slate roofs with a substructure of trusses, battens, solid wood or concrete. Our slate hook is unfortunately not suitable for slate roofs with thicker slates, such as Rosemary or Beavertail slates.

Our tip: to make slate roofs watertight again after installing the mounting system, specialist knowledge of slate roofs is required. Before you start, contact a slate roofing specialist to discuss the project!



Both horizontal and vertical rails possible

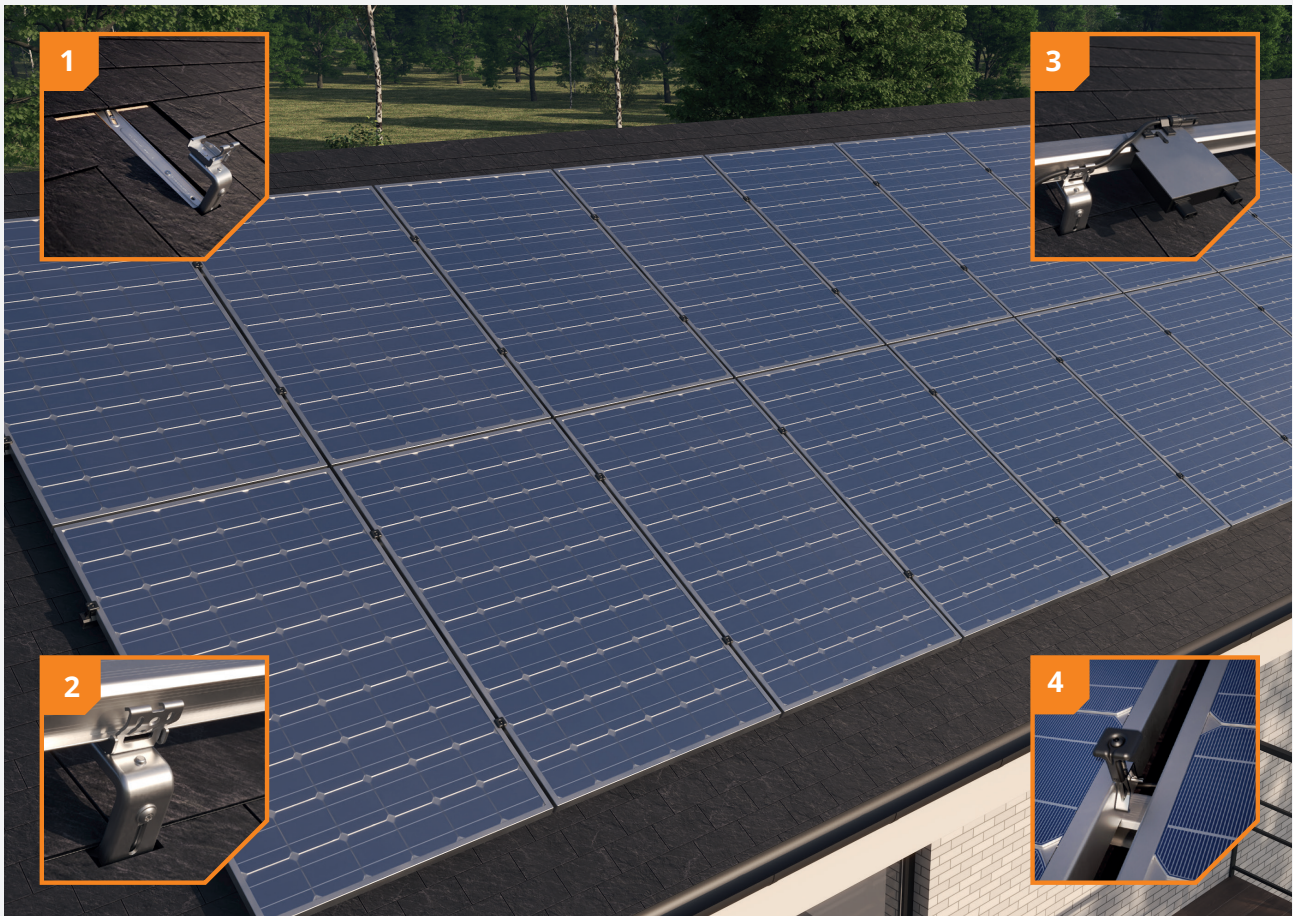
Thanks to the rotatable ClickFit EVO click connection on the slate hook, the mounting system can be installed in both landscape and portrait orientation with both a horizontal and vertical rail. This offers all the flexibility to optimally mount the panels on the roof whatever the conditions.

ADVANTAGES FOR THE INSTALLER

- ✔ Pre-assembled - roof hook with rail clicker
- ✔ Only 4 components on the roof
- ✔ Only one tool needed for the mounting system
- ✔ Quick and easy installation
- ✔ 20-year product warranty

ADVANTAGES FOR YOUR CUSTOMER

- ✔ Quick mounting
- ✔ Both landscape and portrait orientation possible
- ✔ Aesthetic design, also available in black
- ✔ Extensively tested product
- ✔ 20-year product warranty



1 Assembled hook with height adjustment

Quick and easy mounting with the assembled hook that already has the EVO click connection on it. When mounting on a solid substructure or rafters, with the slotted hole you can offset the second screw, reducing the risk of splitting the underlying batten. Additionally, the hook has a stepless height adjustment to correct a certain degree of roof sagging.

2 Unique click connection

The hook is equipped with a self-aligning click connection. This makes it easy to install the mounting rail from above.

3 Integrated cable management

Cables and connectors are neatly and securely held in place in the roof hook. You can also simply click the optimizer or micro-inverter onto the rail with the MLPE clip.

4 Always the right measurements

The universal module clamp is adjustable in height and therefore suitable for solar panels with a frame thickness between 30 and 50 mm. Due to its smart design, this panel clamp can be used as a mid clamp and as an end clamp (in combination with the end cap).

ROOF FASTENERS



ClickFit EVO Slate Roof Hook
1008042

MOUNTING RAIL



ClickFit EVO Mounting rail	
Mounting rail 1188mm	1008131
Mounting rail 2338mm	1008132
Mounting rail 3488mm	1008133
Mounting rail 3500mm	1008007
Mounting rail 4638mm	1008134
Mounting rail 5770mm	1008135

MODULE CLAMP & END CAP



ClickFit EVO Module Clamp Universal grey
1008020



ClickFit EVO Module Clamp Universal black
1008020-B



ClickFit EVO Mounting rail End cap grey
1008060



ClickFit EVO Mounting rail End cap black
1008060-B



ClickFit EVO End Cap without end clamp support grey
1008066



ClickFit EVO End Cap without end clamp support black
1008066-B



ClickFit EVO End Clamp Support grey
1008065



ClickFit EVO End Clamp Support black
1008065-B

ACCESSORIES



ClickFit EVO Mounting Rail Connector Piece
1008061



ClickFit EVO MLPE Clip Light Weight up to 2kg
1008067



ClickFit EVO MLPE Clip Heavy Weight from 2 to 8kg
1008068



ClickFit EVO Auxiliary set with cable clip
1008064



ClickFit EVO bit torx 30
1008069

Calculator

In the Esdec calculator you can manage and calculate all your projects, for both pitched and flat roofs. One platform with all Esdec mounting systems for the most reliable calculation of your project.

- ✓ Save time: manage all your projects on one platform
- ✓ One calculator for projects on pitched and flat roofs
- ✓ All calculations are based on extensive testing and the latest safety standards

Unlimited calculations: use the calculator for your own project calculations without limits on the roof height. The calculator also takes into account the terrain category, snow load and wind zone to provide accurate advice, specific to your project.

Go to esdec.com/en/calculator



Warranty

ClickFit EVO meets all of the requirements and standards that currently apply. ClickFit EVO comes with a unique 20-year product warranty, thus ensuring the system's quality.

- ✓ Use of premium high tech materials
- ✓ Extensively tested
- ✓ 20 years' product warranty





**BUILDING VALUE⁺ FOR
SOLAR PROFESSIONALS**

Esdec

Londenstraat 16
7418 EE Deventer
Nederland

☎ +31 850 702 000

✉ info@esdec.com